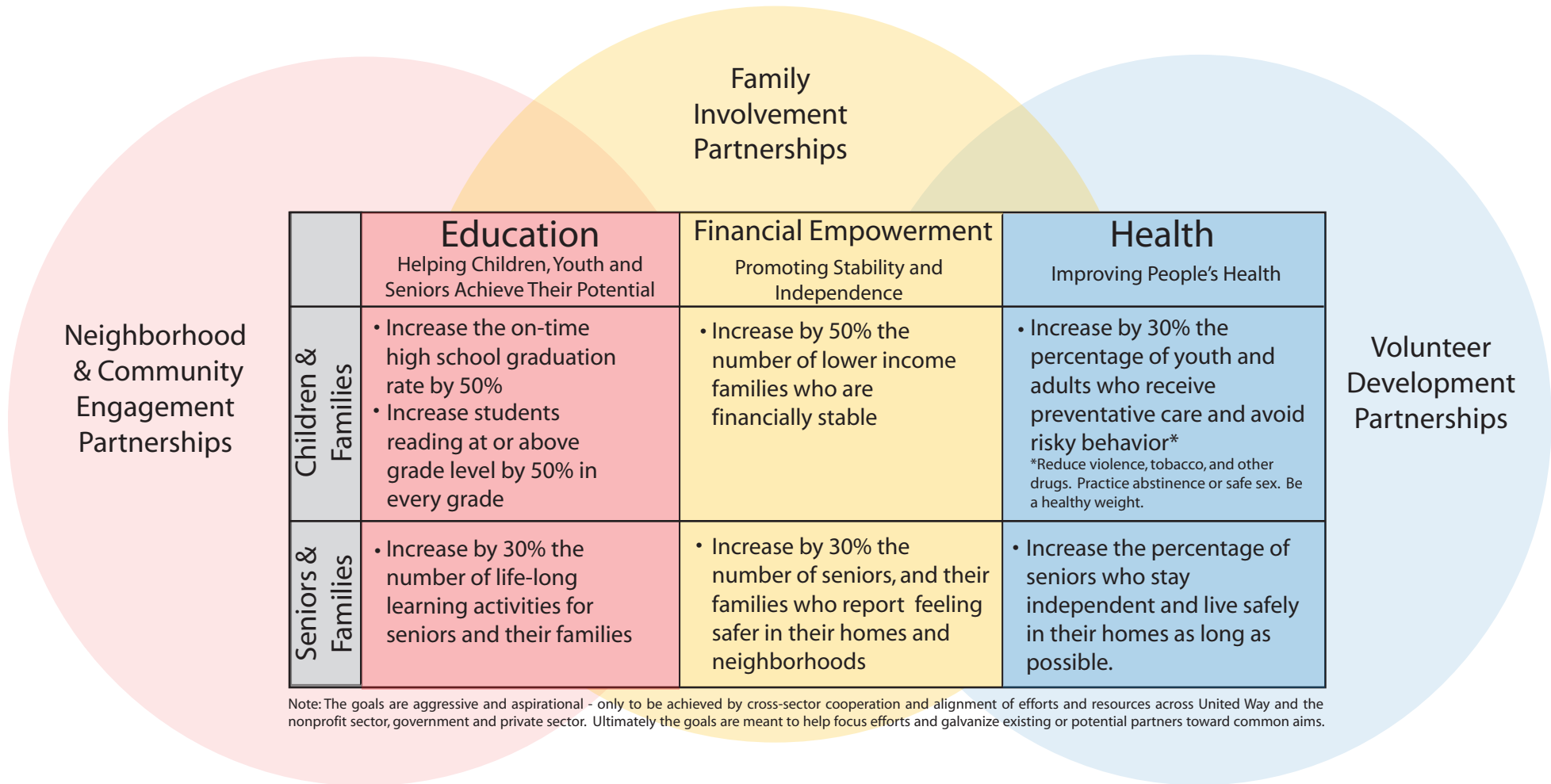


20/20 Community Impact Goals

In 2009, United Way asked 6,000 local individuals from all backgrounds, 300 businesses and organizations, and hundreds of community leaders to share their hopes and desired goals for the future. This Power of Partnership Initiative (POPI) reached the following unprecedented level of agreement on ten year goals:



Note: The goals are aggressive and aspirational - only to be achieved by cross-sector cooperation and alignment of efforts and resources across United Way and the nonprofit sector, government and private sector. Ultimately the goals are meant to help focus efforts and galvanize existing or potential partners toward common aims.



UWSBC Funders, Funded Agencies, Program Partners 2014-2015

United Way
of Santa Barbara County



211
(AAA) Area Agency on Aging
AARP
AIDS Housing SB
Adult & Aging Network
All Saints by the Sea Church
Alzheimer's Association
American Indian & Health Services
American Red Cross- Santa Barbara
AmeriFlex Financial
Art From Scrap
ASES Cooking Lessons
Assistance League of Santa Barbara
Associated Students Coastal Fund
Ballard School
Bank of America
Bank of the West
BEGA Lighting
Bonita School District
Boys and Girls Club of Santa Barbara
Brandon Elementary School
CA Endow Children's Health
CA Saves
California State Parks
Canalino Elementary School
Cancer Center of Santa Barbara with Sansum Clinic
Caregiver Coalition of SB
Carpinteria Chambers of Commerce
Carpinteria Children's Project at Main Carpinteria
Carpinteria Community Pool
Carpinteria Library
Carpinteria Middle School
Carpinteria Unified School Dist.
Catholic Charities Santa Barbara

CenCal Health
Channel Islands International
Race Way
Chase Bank
Child Abuse Listening & M Mediation
City of Carpinteria
City of Carpinteria Aquatics
City of Carpinteria Parks and Rec
City of Goleta
City of Santa Barbara
City of SB Fire Department
City of SB Parks & Rec
City of Santa Barbara Police Department
Cleveland Elementary School
Coast Caregiver Resource Center
Coastal Housing Partnership
Coeta & Donald Barker Fdtn
College School Dist Santa Ynez
Community Action Commission
Community Counseling & Education Center
Community West Bank
Cornelia Moore Dental Foundation
Cottage Health System
Council on Alcoholism and Drug Abuse
County of Santa Barbara
County of Santa Barbara- ADMHS
County of Santa Barbara- Human Services Fund
Co of SB- Probation Department
Co of SB- Sheriff Department
Deckers Outdoor Corporation
Direct Relief International
Doctors Assisting Seniors at Home (DASH)
Dollywood Foundation

Domestic Violence Solutions for Santa Barbara
Dons Net Café (SBHS)
Dos Pueblos H.S. Pool
East Side Library
Easy Lift Transportation
Edison International
El Camino Elementary School
Elings Park Foundation
Ellwood Elementary
Errett Fisher Foundation
Everybody Dance Now!
Explore Ecology
Fairview Gardens
Family Service Agency
Food from the Heart
Foodbank of SB Co.
Franklin Elementary School
Friendship Adult Day Care
Girl Scouts of California's Coast
Girls Inc. of Carpinteria
Girls Inc. of Greater SB
Goleta Chambers of Commerce
Goleta Union School District
Goleta Valley Beautiful
Goleta Valley Jr. High School
Good Samaritan Shelter
Harding Elementary School
Healthy Start
Herbert and Gertrude Latkin Foundation
Hollister Elementary School
Hope School
Housing Authority City of SB
Hutton Parker Foundation
Independent Living Resource Center
Internal Revenue Service
Isla Vista Youth Projects
Kellogg Elementary School
Key Class
Kind World Foundation

La Colina Jr. High School
La Cumbre Junior High School
La Cumbre Foundation
La Patera Elementary School
Lake Casitas
LeVine Family Foundation
Lions Club, Goleta
Martial Arts Family Fitness
Monte Vista Elementary School
Montecito Bank and Trust
Montecito Family YMCA
Mountain View Elementary School
moxi-The Wolf Museum of Exploration + Innovation
Music Academy of the West
Northern SB United Way
Notes for Notes
Olive Grove Charter School
Page Youth Center
Parma Eastside Parents Center
Paul Mitchell the School
Peabody Charter School
People's Self-Help Housing
Playback Studios
Primerica Securities
Rabobank
Red Cross of Santa Barbara County
Red Feather Ball
Rotary Club of SB
Rusty's Pizza
S.B. Federal Parole Day
Reporting Center
Safety Matters
Sandy Point Ink
Santa Barbara Beautiful
Santa Barbara Botanic Garden
Santa Barbara Chambers of Commerce
Santa Barbara City College

Santa Barbara County Education Office
Santa Barbara Eyeglass Factory
Santa Barbara Family Care Ctr
Santa Barbara Farmer's Market
Santa Barbara Housing Authority
Santa Barbara Junior High School
Santa Barbara Museum of Art
SB Museum of Natural History
SB Neighborhood Clinics
SB Parks and Rec- Recreation Afterschool Program (RAC)
SB Police Activities League
SB Public Library Main
SB Public Library System
Santa Barbara Rape Crisis Center
Santa Barbara Rescue Mission
Santa Barbara Sailing Center
SB Service Learning Initiative
SB Sport Fishing Clubs
SB Unified School District
Santa Barbara Village
Santa Barbara Youth Sailing Association
Santa Ynez College School: K-8
Santa Ynez Valley People Helping People
Santa Ynez Valley Union High School
SB Airport Community Education
SBUSD- Nutritional Services
Scholarship Foundation of SB
Sempra Energy
Solvang Elementary School
Solvang School District
St. Vincent's
Student Transportation of America
Teach for America
The Village
Toastmasters/Goleta Rotary
Towbes Foundation

Transition House
Ty Warner Sea Center
UCSB
UCSB Associated Students
UCSB Reef
Union Bank Foundation
Union Bank: Corporation & Employees
United Boys and Girls Clubs SB
United Ways of California
Unity Shoppe
US Bank
Valley Haven Senior Center
Veggie Rescue
Vieja Valley Elementary School
Visiting Nurse and Hospice Care of Santa Barbara
Volentine Family Foundation
Walter & Holly Thomson Foundation
Washington Elementary School
Waterford Mobile Reading
Weingart Foundation
Wells Fargo Bank
Westmont College
Whole Foods
William Weiss Foundation
Williams-Corbett Foundation
Women's Economic Ventures
Wood-Claeysens Foundation

**Thank you to our 203
generous partners!**